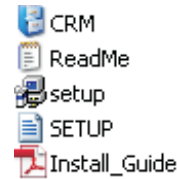


Installation package contents:

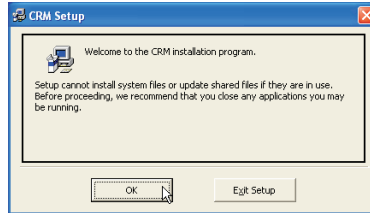
A typical CRM installation package contains these files:

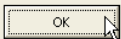
Installation is quick and easy.



To start the installation, double click on the file:  setup

You will see the following page:



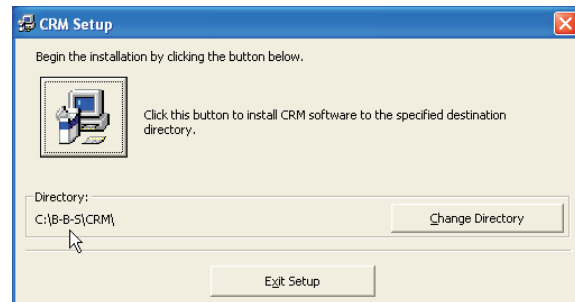
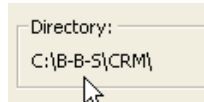
Click  to proceed.

You will see this page:

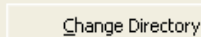
If your Windows installation is on drive C:

simply click  to run the installation,

using the default settings:



To change the installation location

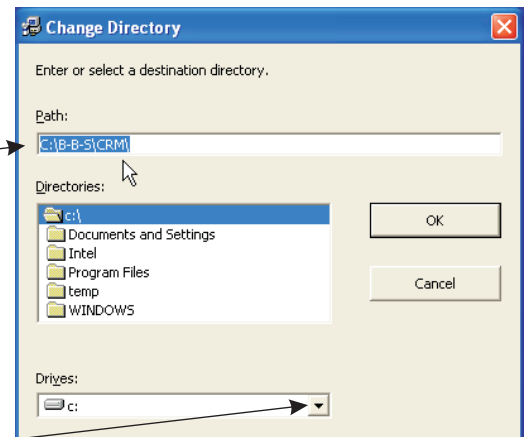
click 

This will show the Change Directory Page

Note the current installation location:

Change the drive letter:


example: Original Location  New location 



Alternative:

You can also click on the **Drives dropdown** and choose the drive you wish to use. (usually the drive where Windows is installed)

If you use this method, you will need to type the FOLDER NAMES in the path box:

The result will look like this example: 

Click  to continue.

Ready to proceed, installing to a customized location:

If there is any problem during installation, click CANCEL, confirm, and run Setup again, checking your settings.

